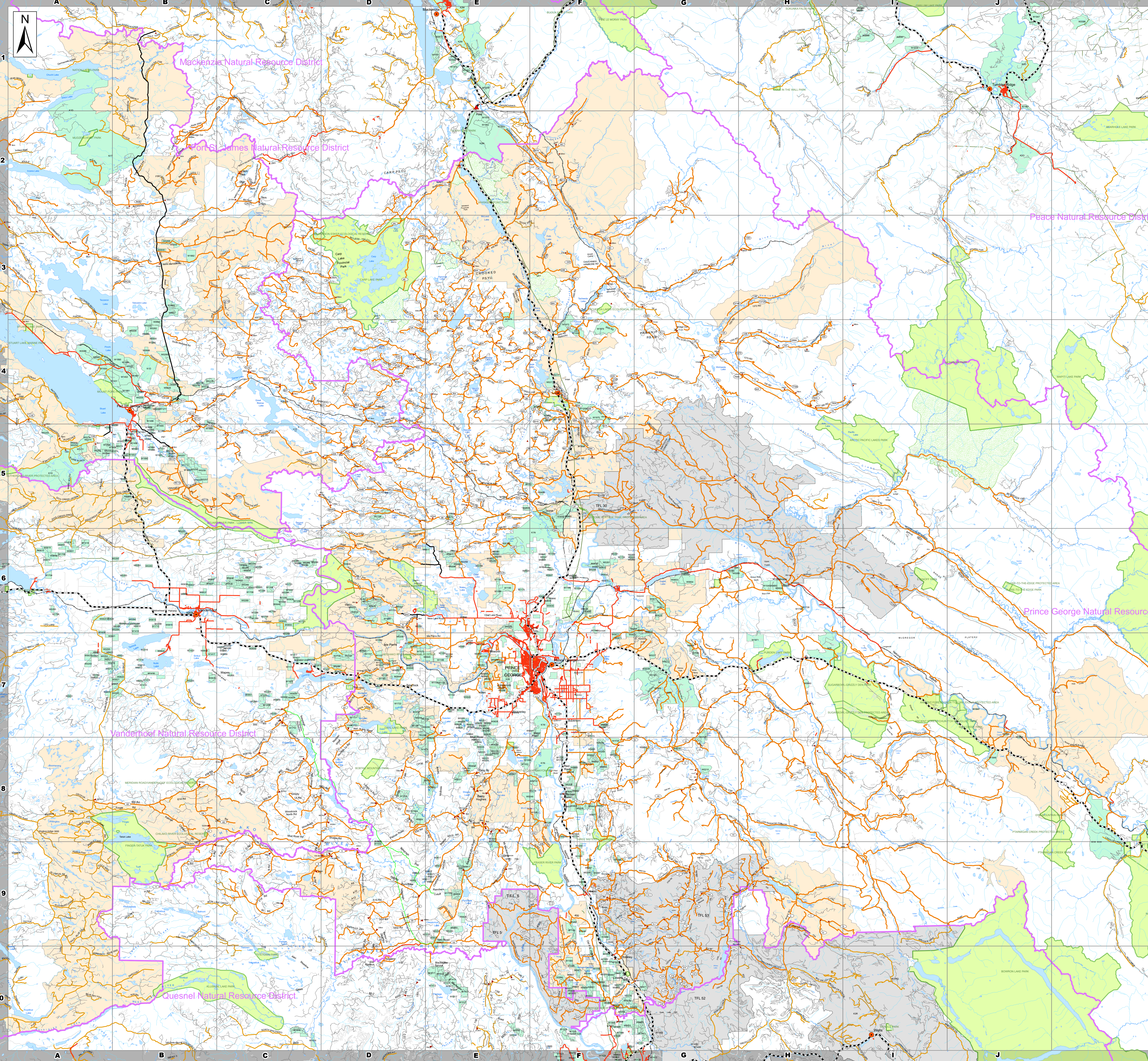


# Prince George Natural Resource District Road User Map

April 2022



- City pts
- Highway
- Telegraph Trail
- Public Road (Paved)
- Forest Road Gravel
- Road Gravel
- Permitted Road
- Digital Road Atlas
- Railway
- Tunnel
- Natural Resource District
- Woodlot or Community Forest
- Tree Farm Licence
- Treaty Land
- BCTS Chart Area
- Park and Protected Area

Operating Area	Road Name	Road Number	Sections	Map Coordinate
Teardrop	100	100A, 100B	E	6
	200	1, 2	E	6
	200	4, 20	E	5
	200	21, 22, 23	E	5
	300	3A, 3B	E	5
	300	3C, 3D	D	5
	400	400	E	5
	563	563	E	5
	600	5A, 5B, 6A, 6B, 7A	E	5
	600	7B, 7C	D	4
	700	700	E	5
	800	800, 800S	E	5
	900	900	E	5
	1100	11R	E	5
	1200	12R	D	4
1400	14R	E	6	
1500	15R	E	6	
1600	16R	E	5	
7600	7, 9	D	4	
Dac's	DOC, DOC2	D	6	
Hoodoo	HOO, WHOO	D	6	
Key Kay	K1, K2, K3	D	6	
Lamb	LAMB	D	5	
Mandalay	MAN	D	6	
Margaret	MARG	D	5	
Maidowan	MOLD	E	6	
R Road	R	D	6	
Rahn	RAHN	D	6	
Ranch	RANC	D	6	
Salmon	SA1	F	6	
Salmon	SA2	E	5	
Salmon	SA2	E	5	
West Creek	WC1, WC2	D	5	

Operating Area	Road Name	Road System	Sections	Map Coordinate	
Davie Lake	100	1A, 1B, 1C	F	4	
	100	1D, 1E	E	4	
	200	2A, 2B	F	4	
	200	2B, 2C, 2D, 2E	E	4	
	200	2F, 2G	D	4	
	200	2G, 2H, 2I	D	3	
	300	3A, 3B	E	4	
	300	3B, 3C	E	3	
	400	4A, 4B, 4C, 4D	E	3	
	400	4D, 4E	D	3	
	500	5A	E	3	
	500	5A, 5C, 5D	F	2	
	600	6A, 6B, 612, 617	F	5	
	607	607	F	5	
	Chuchinka	700	7A, 7B, 7C, 7D, 7E	F	4
700		7F, 7G, 7H	G	4	
700		7I, 7J, 7K	H	4	
764		764A	H	4	
779		779A	H	4	
Chuchinka	784	784A	H	4	
	785	785A	H	4	
	785	785A	H	4	
Tacheeda	800	8A, 8B	F	4	
	800	8B, 8C, 8D, 8D1, 8E	F	3	
	800	8E, 8F, 8G	F	2	
Chuchinka-Colbourne	881	881A	F	2	
	887	887A	F	2	
Bill's Creek	900	9A	F	3	
	900	9A, 58B	G	3	
Table River	1000	10A	F	3	
	1000	10A, 10B, 10C	G	3	
Table River	1000	10C, 10D	H	3	
	1080	108A	F	3	
Missinka	1200	12A, 12B	G	4	
	1200	12B, 12C, 12D	H	4	
Missinka	1269	1269A	H	4	
	1270	1270	H	4	
	1300	13A	G	4	
Hominka	1300	13A, 13B	H	3	
	1372	1372	H	3	
	1374	1374A	H	3	
Crooked River	1400	14A	E	4	
	1500	15A, 15B	D	4	
	1600	16A	E	4	
	1900	19A	F	4	
	2000	20A	F	4	
	2600	26A, 26B	F	4	
	Bear Lake	2800	28A	F	5
		2900	29A, 29B	F	4
	3100	31, 31A	E	4	
	Chuchinka-Hambone	3300	33A, 33B, 33C	F	3
3400		34A	E	4	
3800	38A	E	4		
	3900	39A	E	4	
5100	51A	G	4		
	5200	52A	E	4	
5200	52A	E	5		
	5900	59A, 59B	E	4	
6500	65A, 6510, 604	F	4		
	6500	65A	G	4	
6900	69A, 69B, 66A, 682	F	4		
	6900	67A, 68A	F	5	
7000	70A, 71A, 72A	D	3		
	7000	72A, 73A	D	4	
8600	86A	D	3		
	8600	86A	C	3	
8600	86B	C	4		
	8700	87A	C	3	
8800	88A	C	3		
	88A	ALF	E	5	
Bainey	BAIN	F	5		
	BAIN	E	5		
Caine	CA	F	5		
	CA	F	5		
Carp Lake	CL	E	2		
	CL	D	2		
Carp Lake	CX	E	3		
	CX	F	3		
Crocker	CC	F	3		
	CC	G	3		
Crocker	CC	G	2		
	CC	G	2		
North Olsson	NO1	F	5		
	WM	C	3		

